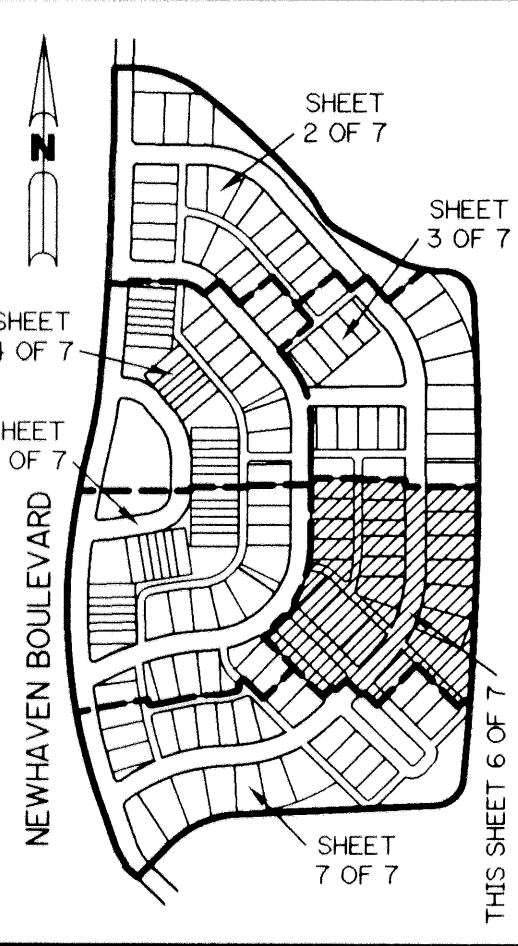


# NEWHAVEN - 7B - PHASE 1 AT ABACOA

BEING A REPLAT OF A PORTION OF TRACT RN7B ACCORDING TO THE PLAT OF ABACOA PLAT NO. 1, AS RECORDED IN PLAT BOOK 78, PAGES 145 THROUGH 163, INCLUSIVE, OF THE PUBLIC RECORDS OF PALM BEACH COUNTY, FLORIDA. LYING IN SECTION 24, TOWNSHIP 41 SOUTH, RANGE 42 EAST.

SHEET 6 OF 7 JANUARY, 1999



KEY MAP  
N.T.S.

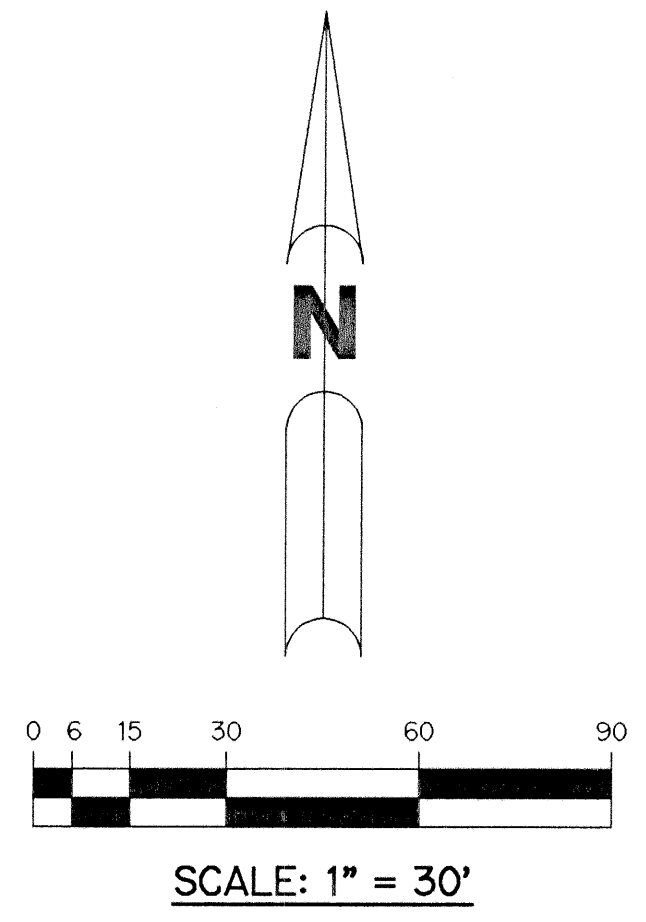
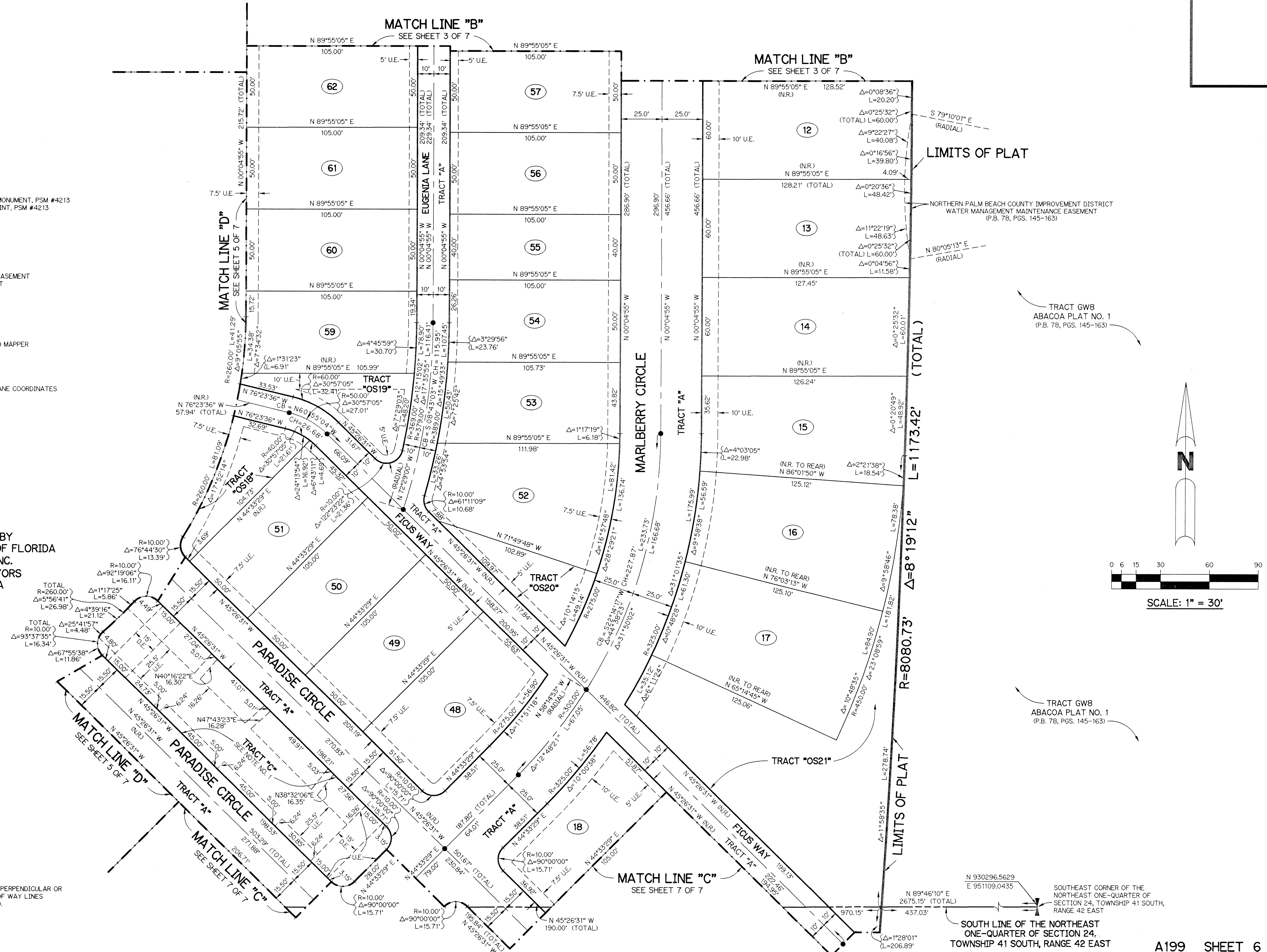
**LEGEND:**

- - SET PERMANENT REFERENCE MONUMENT, PSM #4213
- - SET PERMANENT CONTROL POINT, PSM #4213
- Δ - DELTA ANGLE
- BT - BUFFER TRACT
- CL - CENTERLINE
- D.B. - DEED BOOK
- D.E. - DRAINAGE EASEMENT
- D.W.E. - DRIVEWAY EASEMENT
- L - ARC LENGTH
- L.A.E. - LIMITED ACCESS EASEMENT
- L.M.A.E. - LAKE MAINTENANCE ACCESS EASEMENT
- L.M.E. - LAKE MAINTENANCE EASEMENT
- N.R. - NOT RADIAL
- N.T.S. - NOT TO SCALE
- OS - OPEN SPACE TRACT
- O.R.B. - OFFICIAL RECORD BOOK
- PA - PEDESTRIAN ACCESS TRACT
- P.B. - PLAT BOOK
- P.S. - PAGES
- P.S.M. - PROFESSIONAL SURVEYOR AND MAPPER
- R - RADIUS
- R/W - RIGHT-OF-WAY
- S.T. - SURVEY TIE
- U.E. - UTILITY EASEMENT
- N 737648.0171 E 905258.2326 - DENOTES STATE PLANE COORDINATES
- CB - CHORD BEARING
- CH - CHORD

THIS INSTRUMENT PREPARED BY  
PERRY C. WHITE, P.S.M. 4213, STATE OF FLORIDA  
LAWSON, NOBLE AND WEBB, INC.  
ENGINEERS PLANNERS SURVEYORS  
WEST PALM BEACH, FLORIDA  
LB#6674

**NOTE:**  
COORDINATES SHOWN ARE GRID COORDINATES  
DATUM = NAD 83 (1990 ADJUSTMENT)  
ZONE = FLORIDA EAST ZONE  
LINEAR UNIT = U.S. SURVEY FEET  
COORDINATE SYSTEM 1983 STATE PLANE  
TRANSVERSE MERCATOR PROJECTION  
ALL DISTANCES ARE GROUND  
SCALE FACTOR = 1.0000077  
PLAT BEARING = GRID BEARING  
NO ROTATION (PLAT = GRID)

**NOTE NO. 1:**  
ALL EASEMENT LINES ARE PERPENDICULAR OR PARALLEL TO THE RIGHT OF WAY LINES UNLESS OTHERWISE NOTED.



LIMITS OF PLAT

TRACT GW8  
ABACOA PLAT NO. 1  
(P.B. 78, PGS. 145-163)

TRACT GW8  
ABACOA PLAT NO. 1  
(P.B. 78, PGS. 145-163)

SOUTH LINE OF THE NORTHEAST ONE-QUARTER OF SECTION 24, TOWNSHIP 41 SOUTH, RANGE 42 EAST  
N 930296.5629 E 951109.0435  
SOUTHEAST CORNER OF THE NORTHEAST ONE-QUARTER OF SECTION 24, TOWNSHIP 41 SOUTH, RANGE 42 EAST